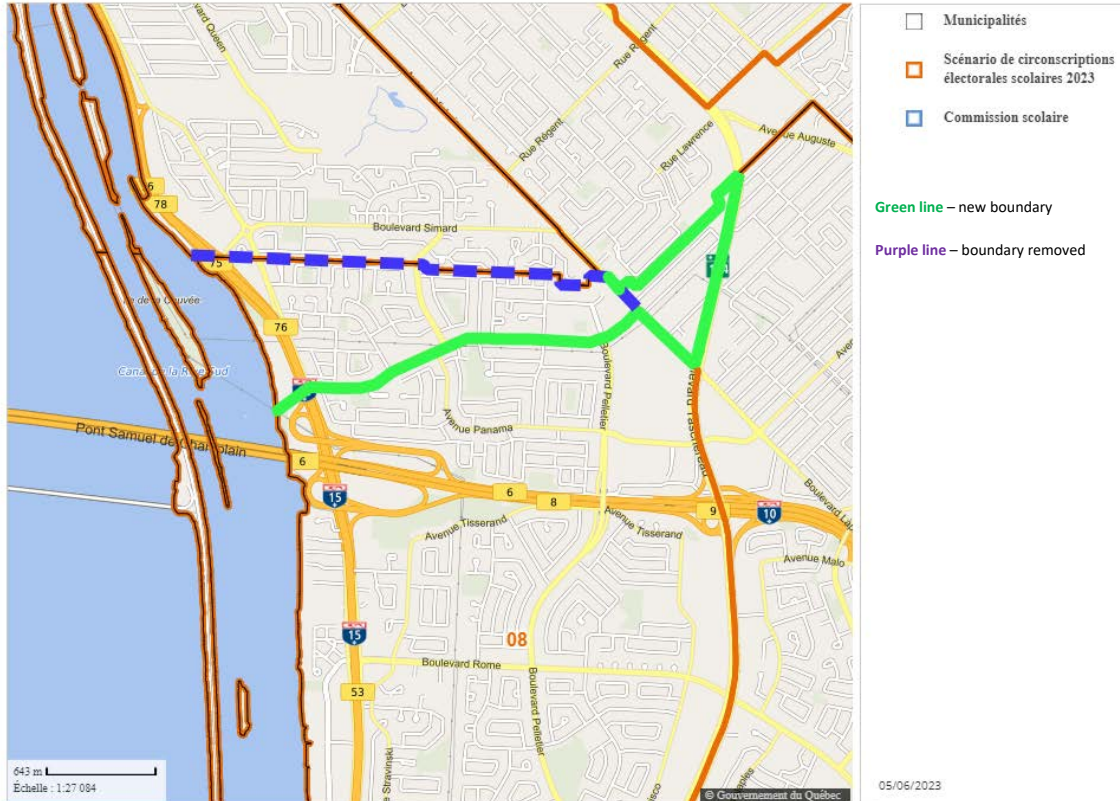


ELECTORAL DIVISIONS NUMBER 8 (Part 2)



Electoral Division	Description	Number of Electors
8	Includes the part of the City of Brossard bounded as follows: Starting from a point located at the intersection of Provencher Boulevard and Lapinière Boulevard, this boulevard, Taschereau Boulevard (Highway 134), the southern and western municipal limit, Samuel-De Champlain Bridge, René-Lévesque Highway (20), the extension of Provencher Boulevard and this boulevard to the starting point.	2,342