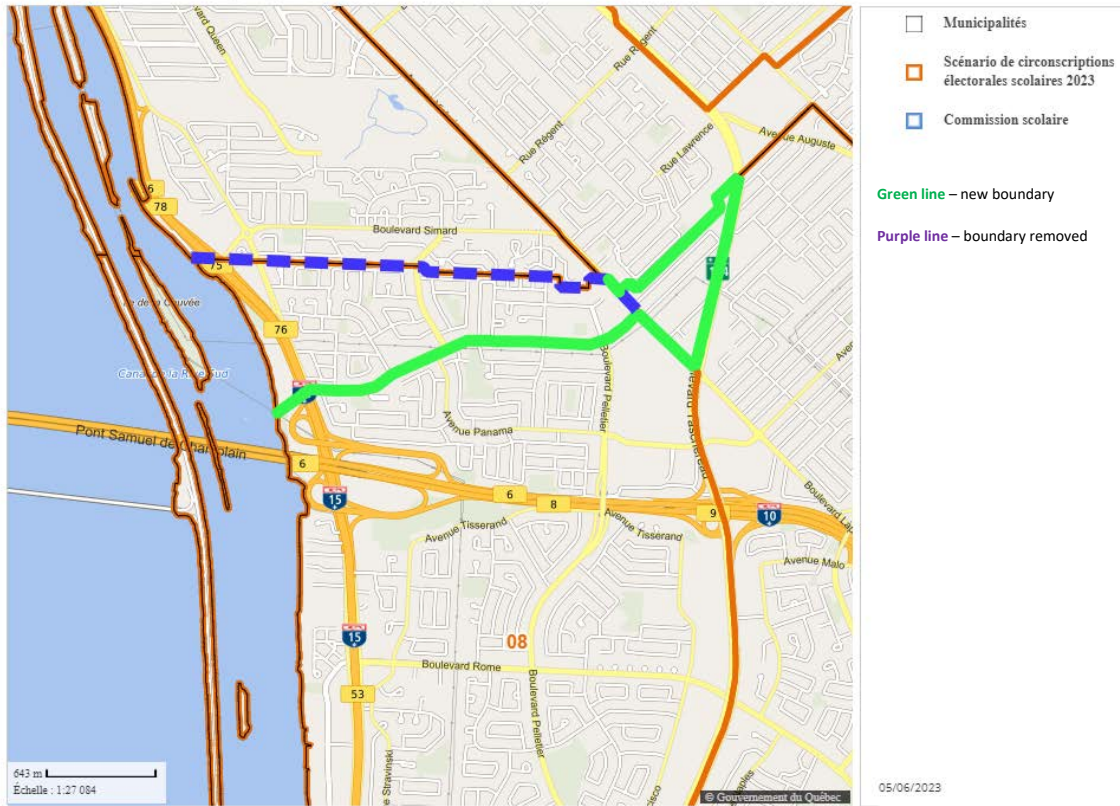


ELECTORAL DIVISIONS NUMBER 5 (Part 2)



Electoral Division	Description	Number of Electors
5	<p>Includes the City of Saint-Lambert.</p> <p>Includes the part of the City of Longueuil located in the borough of Vieux-Longueuil and bounded as follows: the part of the borough situated to the south-west of the junction of Taschereau Boulevard (Highway 134) and Sir-Wilfrid-Laurier Boulevard (Highway 116).</p> <p>Also includes the part of the City of Brossard and bounded as follows: Starting from a point located at the intersection of the northern municipal boundary and Taschereau Boulevard (Highway 134), this boulevard, Lapinière Boulevard, Provencher Boulevard and its extension, René-Lévesque Highway (20), Samuel-De Champlain Bridge and the municipal boundary to the starting point.</p>	2,002