

COVID-19 TESTING BY GARGLING AT SCHOOL

Frequently Asked Questions for Parents



ELIGIBILITY & CONSENT

1. Who is eligible for gargle tests in schools?

Only children and staff members without symptoms, recommended for screening by Public Health after being in contact with a positive case in their classroom, are eligible for this type of testing.

2. If my child develops COVID-19 symptoms while at home, may I send my child to school for a gargle test?

No. Gargle tests in schools specifically target children without COVID-19 symptoms. If your child has COVID-19 symptoms, he should not come to school. He should be tested in Clinique désignée de dépistage (CDD), while self-isolating at home until test results are available. Please refer to the online [COVID-19 Symptom Self-Assessment Tool](#).

3. If my child already had COVID-19, must he/she be tested with a gargle test?

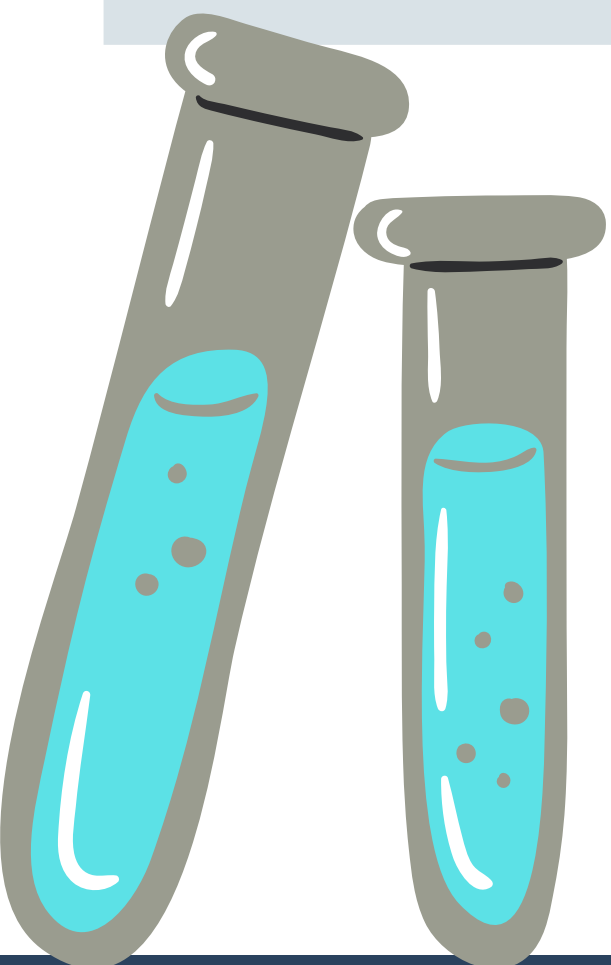
The screening service offer with gargle tests is not meant for children who had COVID-19 (with a confirmation of a test analysed in a laboratory) within the last 6 months. If your child had COVID-19 within the last 6 months, please inform his school.

4. What will happen if I refuse that my child participate in the screening project with gargle tests at school or if my child is not eligible?

No child is obligated to participate in the screening project with gargle tests at school. In such a case, you will be responsible for having your child tested in a CDD should the test be recommended by Public Health.

5. If I give my consent now for my child's participation in the project, may I withdraw my consent later on when my child has to be tested?

Yes. Your consent may be withdrawn at any time. You will be advised if a recommendation for screening concerns your child, and your consent can be withdrawn at that moment by notifying the school.





6. Does the gargle test at school replace the screening in the CDD?

Please refer to the first question of this document to verify your child's eligibility to gargle testing. Any other indication for testing that will be communicated to you, will have to be done in a CDD.

TESTING

7. Will my child be supervised during gargle testing?

Yes. A person designated by the school will be trained in order to explain the method and supervise a small group of children or staff members that will simultaneously perform the gargle test. A team member from the CDD will also accompany this person during the testing process at school.

8. If my child has a particular condition preventing him from doing the gargle test on his own (e.g. handicap), will he be assisted?

The gargle test must be done by the child himself while supervised. If your child has a condition preventing the test be done on his own, he will have to be tested in a CDD rather than at school.

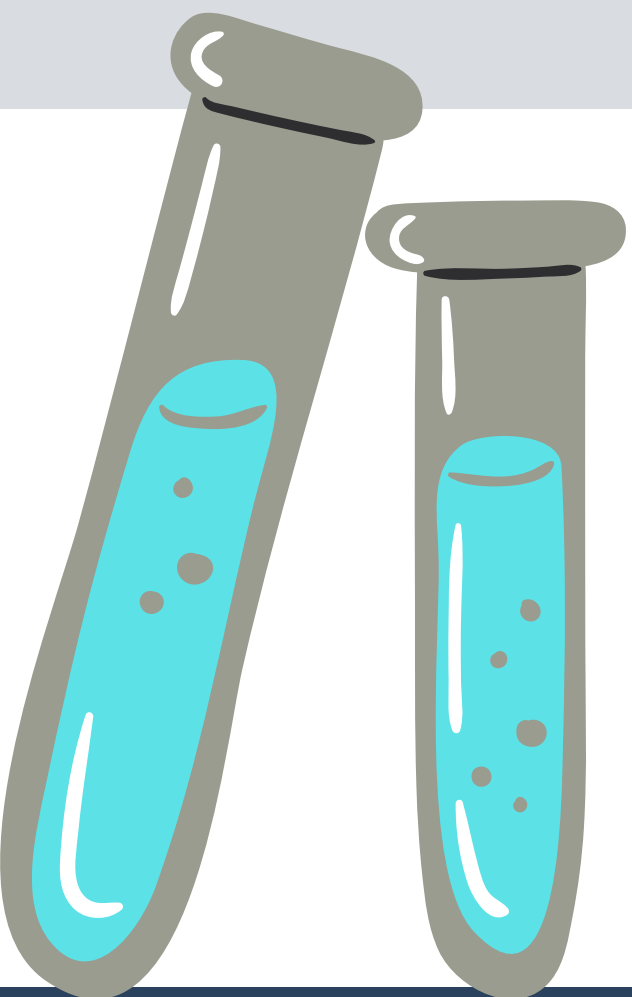
9. What happens if the school advises me my child is not able to do the gargle test?

If your child was not able to perform the test or to gargle correctly, he will have to be tested in a CDD. We recommend you practice gargling at home with your child to make sure gargling is well mastered.

10. May gargle testing have any harmful effects on my child's health?

Gargle testing is a simple, rapid et safe process that does not cause any discomfort. The product used for gargling is spring water and does not contain any harmful substances for your child's health.

AFTER THE TEST



11. After having done the gargle test at school, will my child return to class and continue the school day or should he be isolated at home until the result is available?

After performing the gargle test, your child will return to his classroom and continue his school day as usual. Since he does not have COVID-19 symptoms, and the individual protection measures (wearing the mask) are in place at school, your child will not have to self-isolate. This instruction may evolve if other COVID-19 cases are confirmed in the classroom.



12. How long does it take before receiving the results after a gargle test?

Results are usually available within 12 to 24 hours after the test. If the delay exceeds 72 hours, you can contact the result disclosure centre of your territory at the number written on your child's testing recommendation letter sent by Public Health. Make sure you check your spam inbox since a result may have been sent to you by email (negative results only).

13. Do other members of the family need to isolate until my child's gargle test result is available?

No. In this situation, neither your child, nor other members of your family need to isolate while waiting for the result.

RESULTS

14. What are the possible results of the gargle test?

Other than a positive and negative results, the gargle test may produce an invalid result in rare occasions. This means that the sample provided for the test was inadequate. This may be due to an improper gargling technique or problems in conserving the sample. If your child gets an invalid result, a test done in a CDD will be necessary.

15. Does a positive or negative result obtained after a gargle test have to be validated by another test in a CDD?

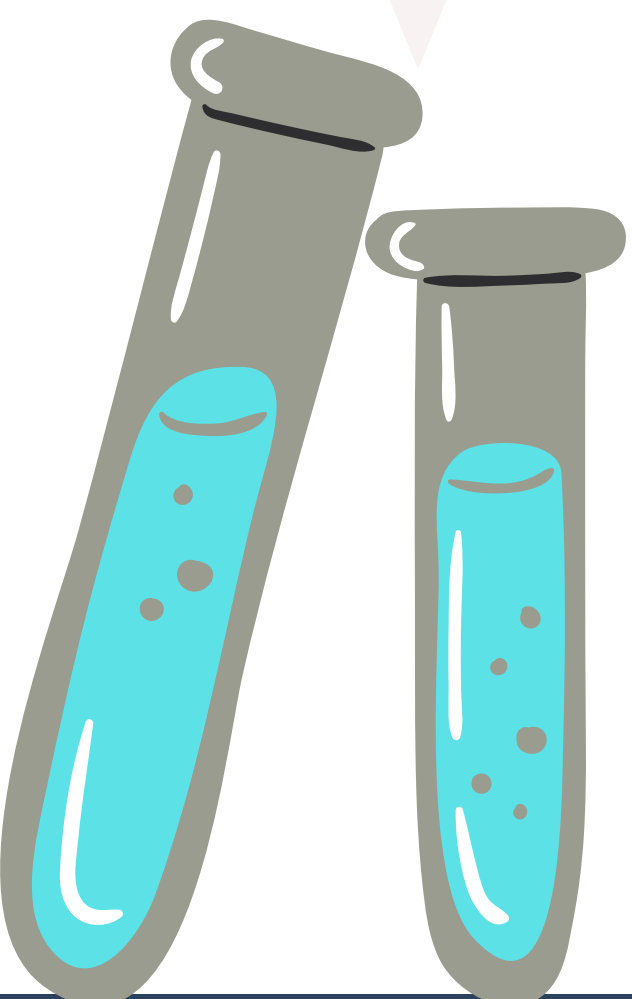
No. The technology used for the gargle test, the Polymerase Chain Reaction (PCR) technology, has an excellent validity. Therefore, a positive or negative result obtained after a gargle test does not need to be validated by a second test. However, for children who develop symptoms at school, a positive result obtained with Panbio rapid test will have to be confirmed by a PCR test done in a CDD.

16. How will I be informed of my child's result after a gargle test?

If the test result is negative, you will be notified by email.

If the test result is positive, you will receive a phone call.

The result disclosure centers of the CDD ensure follow-up of results, not your child's school.



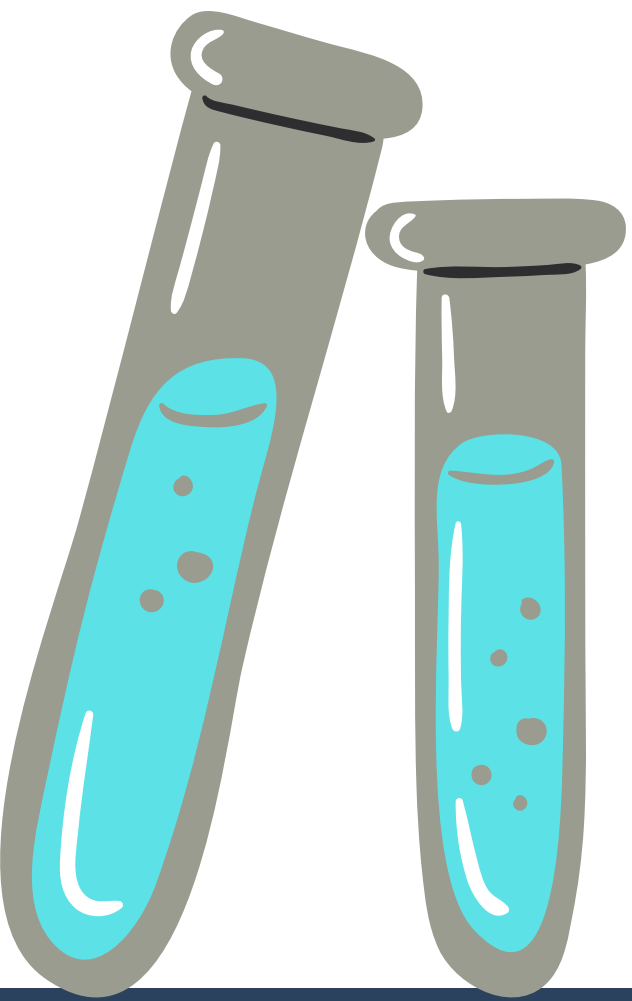


17. What happens after receiving a positive test result following a gargle test at school?

You will receive a phone call from a disclosure centre to communicate your child's test result. You will also receive a call from Public Health giving you instructions to follow, including isolation for your child.

18. What happens after obtaining a negative result following a gargle test at school?

Following a negative result, you will be advised by email at the address you have given in the registration form. Your child may continue attending school after the test.



19. Will the test result be automatically communicated to my child's school?

Although your child will have been tested in school, you will be receiving the result and must consent for disclosure of the result to your child's school, should the result be positive. All positive results are automatically communicated to Public Health for intervention purposes.